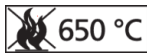
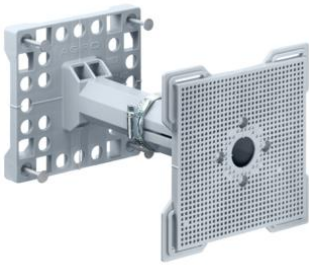


Universal installation housing



Telescopic support

- For supporting all boxes (99xx.xx without support element connection detail) on erected wooden formwork
- Fixing of the base plate by means of the four enclosed nails
- Fixing of the supported box by screwing onto the support plate
- Without extension piece, adjustable for wall thickness from 135 to 205 mm + depth of supported box. With enclosed extension piece, adjustable from 195 to 265 mm + depth of supported box.

Article no:	9957
EAN:	7611614075365
Material	Polyethylene
Length	110 mm
Width	110 mm
Height	150-300 mm
Number of nails	4
Dispatch	10

Universal installation housing for the installation of almost all device types and shapes in concrete walls and ceilings. The housing system consists of nine different installation housings and an extensive range of accessories.

- For displays, LED lights and much more
- For installing almost all shapes and sizes
- For installation in walls or ceilings
- For in-situ or prefabricated concrete
- For horizontal or vertical formwork and for masonry

Locking at required degree of extension by means of supplied hose clamp

Attention: The hose clamp must be fully tightened!

The set dimension (incl. box depth) should always be at least 2 cm greater than the wall thickness

