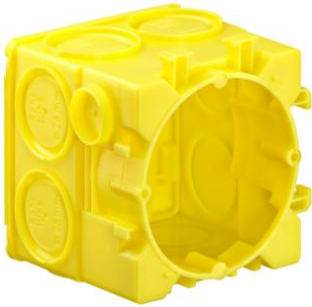


B² one-gang junction boxes



B² one-gang junction box without plaster skin, depth 68.5 mm

- for in-factory installation
- Fixing to the formwork by means of KAISER B² magnet (Art. No. 1261-81)
- 4 screw domes and 2 expanding claw fields for accessory fitting
- Standardised combination distance 71 mm
- 1-piece

Article no:	1263-61
EAN:	4013456142718
Depth	68,5 mm
Installation opening Ø	60 mm
Markings for wires and cables up to Ø 16 mm	4
Break-out openings for DIN EN Ø 20/25 mm conduits	8
Dispatch	100

The new B² one-gang junction boxes for precast concrete offer plenty of space for terminals and cables thanks to their large volume and ease of assembly. The version with a slot for the system magnets (Art.-Nr. 1299-69) or system magnet PLUS (Art. No. 1299-70) is perfect for quick attachment to system magnets that have already been set automatically. Multiple combinations with a standardised combination distance of 71 mm can be created quickly and easily using the connection options on the side of the B² one-gang junction boxes. The separately available conduit connectors for toolless conduit connection prevent concrete from flowing in and, at the same time, dampen conduit vibrations during the compaction process.

- For in-factory installation
- Slot for system magnet (Art.-No. 1299-69) and system magnet PLUS (Art.-No. 1299-70)
- 4 screw domes and 2 expanding claw fields for accessory fitting
- Standardised combination distance 71 mm
- 1-piece

