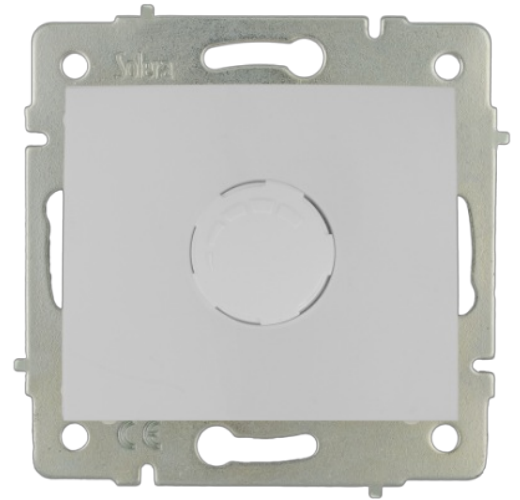


LED dimmer. Flush.

LED dimmer. Flush. White colour. Without frame. Screw connection.
Common applications: Indoor domestic / tertiary environment (Interior of home, offices, shops, etc.)



Features

Mechanism type	Regulator
Type of installation	Flush
Nominal voltage	250V~ (50/60 Hz)
Connection type	Screw connection
Flexible cable section	Up to 2.5 mm ²
Rigid cable section	Up to 2.5 mm ²
Type of operation	Rotary
Power	3-250 W
With fixing claws	Yes

Technical data

Protection Degree (IP)	IP40
Fire resistance (GWEPT)	850 °C
Heat resistance (Ball pressure)	70/125 °C
Free of halogens	Yes

Regulations

CE marking	Yes
UK marking	Yes
CMim marking	Yes

According to Regulations UNE/EN	UNE-EN 60669-2-1:2005
---------------------------------	-----------------------

According to REBT	Yes
-------------------	-----

According to European Directive 2014/35 / EU. Low voltage directive	Yes
--	-----
