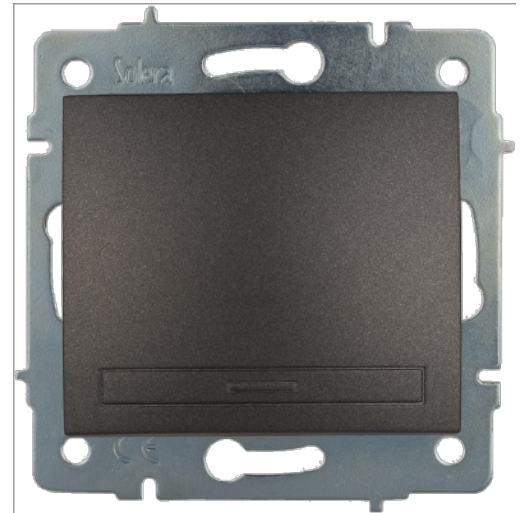


## 2-pole switch 10AX 250V ~. Flush.

2-pole switch 10AX 250V ~. Flush. Graphite colour. Without frame. Quick connection.

Common applications: Indoor domestic / tertiary environment (Interior of home, offices, shops, etc.)



## Features

Mechanism type	Bipolar switch
Type of installation	Flush
Rated current	10AX
Nominal voltage	250V~ (50/60 Hz)
Connection type	Fast connection
Flexible cable section	Up to 2.5 mm <sup>2</sup>
Rigid cable section	Up to 2.5 mm <sup>2</sup>
Type of operation	Rocker key
With fixing claws	Yes

## Technical data

Protection Degree (IP)	IP40
Fire resistance (GWT)	850°C
Heat resistance (Ball pressure)	70/125°C
Free of halogens	Yes

## Regulations

CE marking	Yes
UK marking	Yes

CMim marking	Yes
According to Regulations UNE/EN	UNE-EN 60669-1
According to REBT	Yes
According to European Directive 2014/35 / EU. Low voltage directive	Yes

## Sustainability

According to European Directive 2011/65/UE (RoHS)	Yes (Complies with UNE EN 50581)
According to European Directive 2012/19/UE (RAEE2)	Yes