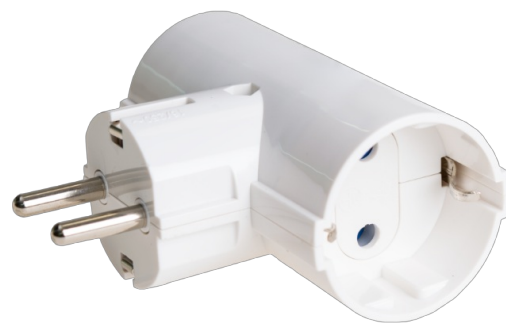


Double socket adapter 2P+E, 16A 250V~. White colour.

Double socket adapter 2P+E, 16A 250V~. White colour. MÁX. 3680W.

Common applications: Indoor domestic / tertiary environment (Interior of home, offices, shops, etc.)



Features

Type	Adapter
No. of bases	2
Basic characteristics	2P+T, 16A 250V~
Maximum power	3.680 W

Technical data

Fire resistance (GWT)	750°C
Heat resistance (Ball pressure)	70/125°C
Free of halogens	Yes

Regulations

CE marking	Yes
CMim marking	Yes
According to Regulations UNE/EN	UNE 20315-1-1 -1-2
According to REBT	Yes
According to European Directive 2014/35 / EU. Low voltage directive	Yes

Sustainability

According to European Directive 2011/65/UE (RoHS)	Yes (Complies with UNE EN 50581)
---	----------------------------------

According to European Directive 2012/19/UE (RAEE2)	Yes
--	-----

ECOEMBES	Yes
----------	-----
