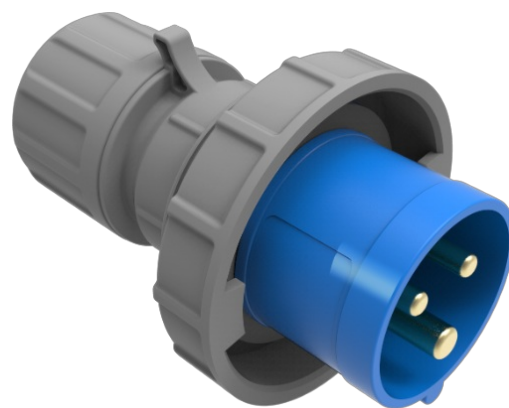


Mobile industrial plug 2P+E, 16A 230V~. IP67

Mobile industrial plug 2P+E, 16A 230V~. IP67

Common applications: Industrial environments (factories, warehouses, etc.)



Features

Type	22 Kg
No. of poles	2P + T
Type of terminal connection	Screw connection
Earth position	6h
Nominal current	16A
Nominal voltage	230V
Color	Blue

Technical data

Protection Degree (IP)	IP67
Protection Degree (IK)	IK09
Impact shock resistance	Strong
Insulation class	Class II
Fire resistance (GWT)	850°C
Heat resistance (Ball pressure)	125°C
Installation temperature	-25°C -> +60°C
Free of halogens	Yes

Regulations

CE marking	Yes
UK marking	Yes

CMim marking	Yes
According to Regulations UNE/EN	UNE-EN 60309-1; -2
According to REBT	Yes
According to European Directive 2014/35 / EU. Low voltage directive	Yes

Sustainability

According to European Directive 2011/65/UE (RoHS)	Yes (Complies with UNE EN 50581)
According to European Directive 2012/19/UE (RAEE2)	Yes
ECOEMBES	Yes