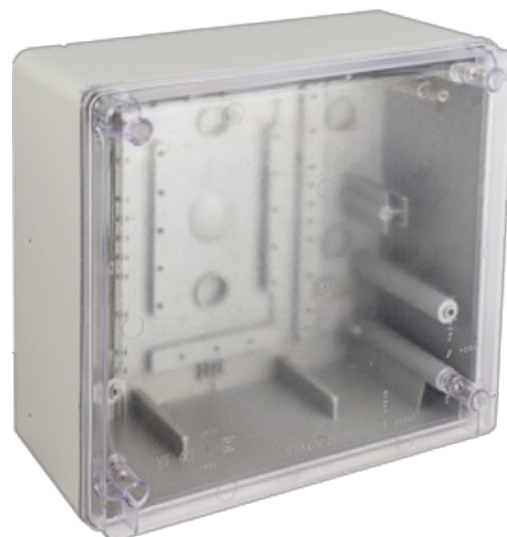


## Watertight connection box 270x250x140 mm. Grey and transparent cover.

Waterproof industrial box. IP65. IK08. External dimensions 270 x 250 x 140 mm. Grey and transparent cover. Smooth side dotted. Stainless steel ultra fast closing screws.

Common applications: Industrial environments (factories, warehouses, etc.)



### Features

Enclosure type	Connection and derivation
Installation method	Surface
Use	Industrial
Location type	Exterior and interior
Dimensions outside (mm) (width x height x depth)	270x250x140
Case material	Insulation
Case color	Grey (RAL7035)
Cap color	Transparent
Battens included	No
Sealable	Yes
Lid closure system	Ultra-fast metal screw
Possibility of mounting strips	Yes (not included)
Possibility of putting lock	Not
Possibility of mounting DIN rail	Yes (not included)
Valid for photovoltaic installations	Yes

### Technical data

Protection Degree (IP)	IP65
Protection Degree (IK)	IK08

Insulation class	Class II
Fire resistance (GWEPT)	650 °C
Heat resistance (Ball pressure)	70 °C
UV resistance	Yes
Free of halogens	Yes
Suitable for saline environments	Yes

## Regulations

CE marking	Yes
UK marking	Yes
CMim marking	Yes
According to Regulations UNE/EN	UNE-EN 60670-1:2022. UNE-EN 60670-22:2007.
According to REBT	Yes
According to European Directive 2014/35 / EU. Low voltage directive	Yes

## Sustainability

According to European Directive 2011/65/UE (RoHS)	The Directive 2011/65/EU (RoHS II) is not applicable as it does not correspond to the definition of Electrical and Electronical Equipment (EEE) as per article 3.1
According to European Directive 2012/19/UE (RAEE2)	Not applicable because it does not meet the definition of Electrical and Electronic Equipment (EEE) as described in Article 3.1(a) of Directive 2012/19/EU (WEEE II).

## Sketch

