



**ELETTRO
BRESCIA®**
QUALITY CABLES



RUBBER



| NOMINAL SECTION mm | WORKING VOLTAGE V | WORKING TEMPERATURE °C | INSULATE MATERIAL |
|-----------------------|----------------------|---------------------------|---|
| 2X1,00 ÷ 5G6,00 | 450/750 | -25 +60 | Rubber insulated under heavy polychloroprene or other equivalent syntetich sheath |
| 2x1,00 ÷ 5G6,00 | 450/750 | -25 +60 | Rubber insulated under heavy polychloroprene or other equivalent syntetich sheath |
| 2x0,75 ÷ 4G6,00 | 300/500 | -25 +60 | Rubber insulated under mean rubber sheath |
| 2X0,75 ÷ 4G1,00 | 300/500 | -25 +60 | Rubber insulated under heavy polychloroprene or other equivalent syntetich sheath |
| 0,50 ÷ 0,75 | 300/500 | -25 +60 | Polychloroprene or other synthetic sheath |
| 0,75 ÷ 1,50 | 300/500 | -25 +60 | Polychloroprene or other synthetic sheath |
| 2X0,75 ÷ 4G6,00 | 300/500 | -40 +90 | Rubber insulated under mean rubber sheath |
| 2X0,75 ÷ 3G1,00 | 300/500 | -25 +90 | Rubber insulated under heavy polychloroprene or other equivalent syntetich sheath |
| 2X0,75 ÷ 5G2,50 | 300/500 | -5 +110 | Rubber insulated under mean rubber sheath |
| 0,35 ÷ 10 | 300/500 450/750 | -30 +155 | Halogen free compound with vinyl acetate |

H07RN-F



H07RN8-F



H05RR-F



H05RN-F



H03RN-F



H05RN-F



H05BB-F



H05BN4-F



H05GG-F



LEV 160



PVC



| NOMINAL SECTION mm | WORKING VOLTAGE V | WORKING TEMPERATURE °C | INSULATE MATERIAL |
|-----------------------|-------------------------------------|------------------------------------|--|
| 0,50 ÷ 240 | 300/500 450/750 | +5 +70 | 70°C PVC |
| 0,50 ÷ 2,5 | 300/500 450/750 | +5 +70 | 70°C PVC |
| 0,50 ÷ 35 | 300/500 450/750 | +5 +90 | 90°C PVC |
| 0,50 ÷ 2,5 | 300/500 450/750 | +5 +90 | 90°C PVC |
| ALL SIZES | 300/300 300/500 | +5 +60 | 70°C PVC |
| ALL SIZES | 300/300 300/500 | +5 +90 | 90°C PVC |
| 2X0,50 ÷ 2X1,00 | H03:300/300 H05:300/500 | +5 +90 | VVH2-F:70°C PVC V2V2H2-F: 90°C |
| ALL SIZES | 220 V c.a. 300 V c.c. | -40 +125 | T3 FIAT |
| 0,35 ÷ 120 | 220 V. c.a. 300 V. c.c. | -25 +105 | PVC FIAT T2 91107/18 DIN 72X551 - ISO6722 |
| ALL SIZE | 1007: 300 1015: 600 1569: 300 | 1007:+70 1015:+105 1569:+105 | PVC |

H05V-K
H07V-K



H05V-U
H07V-U



H05V2-K
H07V2-K



H05V2-U
H07V2-U



H03VV-F
H05VV-F



H03V2V2-F
H05V2V2-F



H03VVH2-F H03V2V2H2-F
H05VVH2-F H05V2V2H2-F



T3 125°C



FASE 3



UL1007-1015-1569



SILICONE



| NOMINAL SECTION mm | WORKING VOLTAGE V | WORKING TEMPERATURE °C | INSULATE MATERIAL |
|---------------------------|----------------------|---------------------------|---|
| ALL SIZES | 300/300 300/500 | -60 +180 | Silicone rubber |
| ALL SIZES | 300/300 | -60 +180 | Silicone rubber |
| 0,50 ÷ 2,5 | 600/1000 | -60 +180 | Silicone EI2 rubber |
| 1,0 | 5/10 KV | -60 +180 | Silicone EI2 rubber |
| 0,35 ÷ 240 | 300/500 | -60 +180 | Silicone rubber |
| 0,35 ÷ 240 | 300/500 | -60 +250 | Silicone THT rubber |
| 0,35 ÷ 240 | 300/500 | -60 +180 | Silicone rubber fiberglass braid |
| 0,35 ÷ 240 | 300/500 | -60 +180 | Silicone rubber Polyester braid |
| ALL SIZES | 300/500 | -60 +180 | Silicone rubber |
| ALL SIZES | 300/500 | -60 +180 | Silicone rubber with steel braid |

H03/5S-K



N2GFAF (N)2GFAF
N2GFA (N)2GFA



HV 0,6/1 KV



EN 50143/B



GS SIAF



GS/THT SIAF/THT



GSV SIAF/GL



SIAF/POL



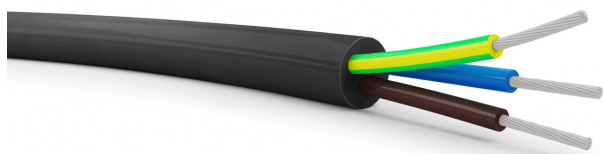
SIHF



SIHF/P



SILICONE



| NOMINAL SECTION mm | WORKING VOLTAGE V | WORKING TEMPERATURE °C | INSULATE MATERIAL |
|-----------------------|----------------------|---------------------------|-------------------|
|-----------------------|----------------------|---------------------------|-------------------|

SIHF/GLP



| | | | |
|-----------|---------|-------------|---|
| ALL SIZES | 300/500 | -60 +180 | Silicone rubber with fibreglass and steel braid |
|-----------|---------|-------------|---|

SIHF/S SIHF/S/SI



| | | | |
|-----------|---------|-------------|---|
| ALL SIZES | 300/500 | -60 +180 | Silicone rubber with screened with copper under the sheath or between the double sheath |
|-----------|---------|-------------|---|

SIHF/PVC



| | | | |
|-----------|---------|-------------|---------------------------------|
| ALL SIZES | 300/500 | -60 +180 | Silicone rubber with PVC sheath |
|-----------|---------|-------------|---------------------------------|

EWKF



| | | | |
|-----------|---------|-------------|--------------------------------|
| ALL SIZES | 300/500 | -60 +180 | Tear resistant silicone rubber |
|-----------|---------|-------------|--------------------------------|

CABLES UL STYLES
3132 - 3135



| | | | |
|-----------|----------------------|------------------------|-----------------|
| ALL SIZES | 3132:300 3135:600 | 3132:+150 3135:+200 | Silicone rubber |
|-----------|----------------------|------------------------|-----------------|

WELDING MACHINE



| NOMINAL SECTION mm | WORKING VOLTAGE V | WORKING TEMPERATURE °C | INSULATE MATERIAL |
|-----------------------|----------------------|---------------------------|-------------------|
|-----------------------|----------------------|---------------------------|-------------------|

ELFLEX



| | | | |
|----------------|---------|-----------|------------------------------------|
| 10 ÷ 120 | 100/100 | +5 +70 | PVC insulated for welding machines |
|----------------|---------|-----------|------------------------------------|

DUALFLEX



| | | | |
|----------------|---------|-----------|---|
| 10 ÷ 120 | 100/100 | +5 +70 | PVC insulated for welding machines with double sheath |
|----------------|---------|-----------|---|

H01N2-D GUMMIFLEX



| | | | |
|----------------|---------|------------|---------------------------------------|
| 10 ÷ 120 | 100/100 | -20 +85 | Rubber insulated for welding machines |
|----------------|---------|------------|---------------------------------------|



H1Z2Z2-K

Low smoke halogen-free, flexible, single-core power cables with cross-linked insulation and sheath.

TECHNICAL DATA

| | |
|-------------------------------|---|
| Nominal voltage | 1,0/1,0 kVca - 1,5 kVdc |
| Applications/Usage conditions | The single core H1Z2Z2-K cable represents a right solution to link the solar cellars between them or to wire with frequency converters and terminal boards. The H1Z2Z2-K cable guarantees good resistance to UV-rays and various weather conditions. The wide working temperature range allows the use also in extreme conditions, avoiding deterioration caused by heat and permitting a right use of the fotovoltaic panel in every season. |
| Conductor | Flexible tinned copper |
| Insulation type | Compound conforming to EN 50618 |
| Sheath type | Compound conforming to EN 50618 |
| Sheath colour | Black, blue, red |
| Operating temperatures | -40°C +90°C |
| Short circuit temperature | Max 250°C 5 sec |
| Test voltage | 6500 Vac - 15000 Vdc |
| Cable markings | ELETTRIO BRESCIA H1Z2Z2-K (I/II)* 1xsect. mm ² TÜV Rheinland Reg. Nr. R (60109330/60108022)* Dca-s2, d2, a1 max 1,8kVdc |
| Minimum bending radius | 4 times the cable diameter far fixed and mobile laying. |
| Notes | * Markings depending on raw materials. 16 mm ² version only for H1Z2Z2-K I. |

STANDARD REFERENCE

| | |
|--------------------|-----------------------------|
| Main standard | EN 50618 |
| UV Resistance | EN 50618 |
| Conductor | EN 60228; IEC 60228 |
| Self-Extinguishing | EN 60332-1-2; IEC 60332-1-2 |
| Ozone resistance | EN 50396 8.1.3 |

CERTIFICATIONS



DIMENSIONS

| Cross section | Wires max diameter | Conductor diameter | Core thickness | Core diameter | Sheath thickness | Medium outer diameter | Electrical resistance at 20°C | Cable approx. weight | Cu factor |
|----------------------|--------------------|--------------------|----------------|---------------|------------------|-----------------------|-------------------------------|----------------------|-----------|
| (Nxmm ²) | (mm) | (mm) | (mm) | (mm) ± 0,1 | (mm) | (mm) ± 0,2 | (Ω/km) | (kg/km) | (kg/km) |
| 1x2,50 | 0,250 | N/A | 0,75 | 3,50 | 0,80 | 5,1 | 8,2100 | 47,00 | 24,00 |
| 1x4,00 | 0,300 | N/A | 0,72 | 3,80 | 0,80 | 5,4 | 5,0900 | 58,00 | 38,40 |
| 1x6,00 | 0,300 | N/A | 0,74 | 4,40 | 0,80 | 6,0 | 3,3900 | 78,00 | 57,60 |
| 1x10,00 | 0,400 | N/A | 0,73 | 5,40 | 0,80 | 7,0 | 1,9500 | 125,00 | 96,00 |
| 1x16,00 | 0,400 | N/A | 0,75 | 6,40 | 0,90 | 8,2 | 1,2400 | 184,00 | 153,60 |

SPECIAL CABLES



CABLES FOR POTABLE WATER - AQUAFLEX



| NOMINAL SECTION mm | WORKING VOLTAGE V | WORKING TEMPERATURE °C | INSULATE MATERIAL |
|-----------------------|----------------------|---------------------------|-------------------|
|-----------------------|----------------------|---------------------------|-------------------|

| | | | |
|-----------|---------|------------|---------------|
| ALL SIZES | 450/750 | -25 +90 | THERMOPLASTIC |
|-----------|---------|------------|---------------|



CERTIFICATIONS



Elettro Brescia, è stata fondata nel 1983 e in questi anni è diventata un'azienda dinamica e tecnologicamente avanzata che oggi detiene la sua posizione di successo tra i migliori produttori di cavi elettrici.

La nostra azienda, armoniosamente inserita nella splendida campagna della Franciacorta, si estende su un'area di 15.000 mq, comprendente un reparto produttivo, un magazzino e il laboratorio di ricerca e analisi.

La completa automazione del processo produttivo assicura costanza qualitativa e assoluta sicurezza.

Il rispetto delle più recenti normative europee è stimolo per tutti noi ad un costante e stretto controllo della qualità del prodotto.

In questi anni abbiamo indirizzato le nostre energie per seguire la nostra missione: "Servire i mercati di tutto il mondo con il miglior servizio pre e post vendita, buona qualità e prezzi molto competitivi". Gli investimenti effettuati e continui volti a migliorare le capacità produttive, gli sviluppi tecnologici e le attività di marketing e, non da ultimo, la qualità delle proprie risorse umane, consentono sicuramente ad Elettro Brescia, ora e in futuro, di svolgere un ruolo sempre più importante nel settore dei cavi speciali e diventare ancora di più un Fornitore di riferimento per tutti gli operatori affinché la propria Mission possa essere realizzata con piena soddisfazione del mercato.

Elettro Brescia, was founded in 1983 and during these years it has become a dynamic and techno-logically advanced company which nowadays holds its successful position among the best manufactures of electric cables.

Our company, harmoniously situated in the wonderful countryside of Franciacorta, covers an area of 15.000 sqm, including a production division, a warehouse and the research and analysis laboratory.

The complete automation of the production process assures consistency of quality and an absolute safety.

The compliance with the latest European regulations is a spur to all of us for a steady close control of the quality of the product.

In these years we directed our energies to follow our mission: "To serve the markets worldwide with the best pre and aftersale service, good quality and very competitive prices". The made and on going investments directed to improve production capabilities, technological developments and marketing activities and last but not least the quality of its human resources, certainly allow Elettro Brescia now and in the future to play a bigger role in the field of special cable and to become even more a Supplier of reference for all operators so that its Mission can be accomplished to full market satisfaction.

The manufacturer reserve the right to modify the products at any time without prior note.



Via Bulloni, 36 Camignone di Passirano (BS)

Via Fornaci, 16 Cortefranca (BS)

Telefono: +39 0306850663

E-mail: info@elettrobrescia.it

Sito Web: www.elettrobrescia.it