

MarKing Pro

Software for marking

Code: SWMP2 - ID code: SWMP2

MarKing Pro is an application to be used to print characters and images on tags and cards, monochromatically. It can be used with the CaburJet printer and CaburPlot plotter, among others.

The program, **which is easy to use and extremely versatile**, allows the user to define the marking parameters, with character and symbol sequences that can be adjusted to meet the needs of the users, and prints them on Cabur tags, which can be selected from a database inserted with the software.

The software allows automatic importing of data for marking of wires, terminal blocks, and equipment in general for the most common electric CADs, such as SPAC Automazione, IGE-XAO, and ELETTRIO GRAPHICS.

The MarKing system makes it possible to use both the Plotter and CaburJet systems simultaneously. If used with the plotter system, the software can manage up to a maximum of 5 peripherals.

If used with Caburjet, the maximum number of peripherals that can be managed depends on the number of USB ports available on the PC.

Thanks to its **intuitive interface** and visual elements, MarKing Pro is easy to use, makes it possible to view the end result before printing, and does not require any special technical skills.

Cabur also offers a **labelling creation service**, which can be provided on the basis of files created in MarKing Pro by the customer. Send Cabur your MarKing Pro files to receive a quotation and service that provides the utmost in efficiency as well as reliable results.

Technical requirements for installation:

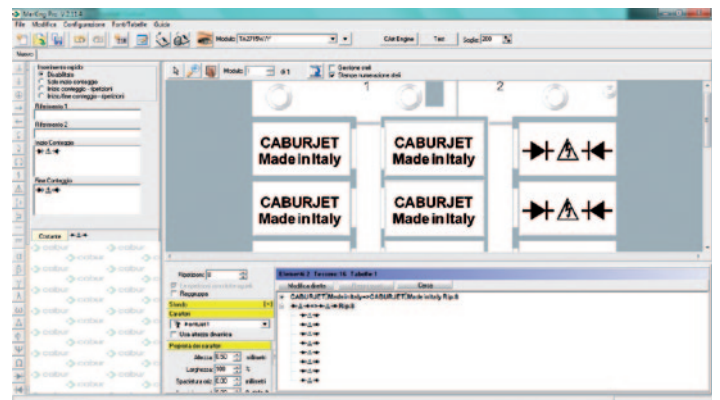
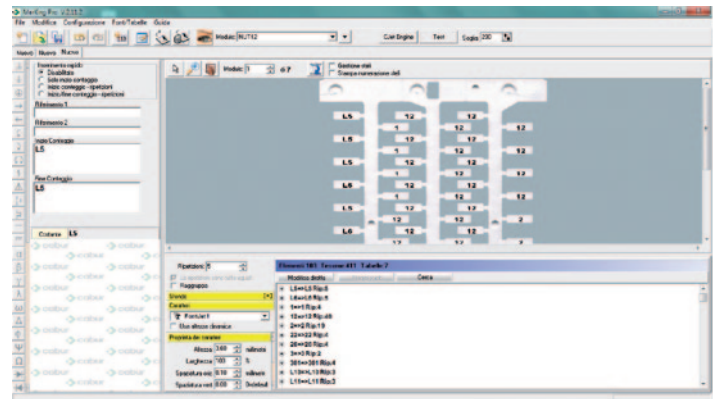
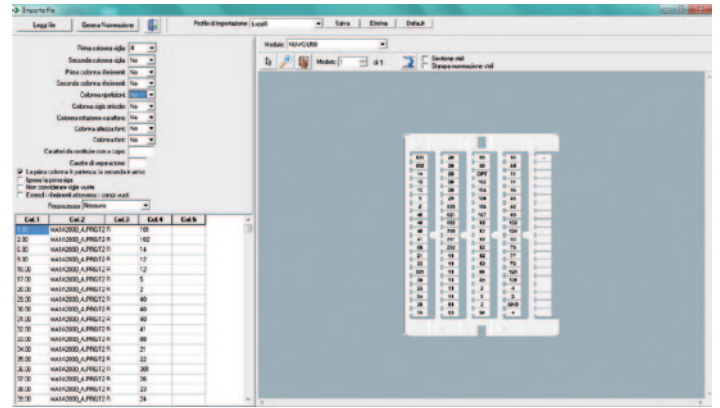
Platform: PC

Operating system:

- for use with CaburJet: Microsoft® Windows™ 98 SP2 or later;
- for use with CaburPlot: Microsoft® Windows™ 95 or later.

Memory: 512 MB RAM minimum

Space available on hard disk: minimum 50 MB



Advantages offered by MarKing Pro

1. Ease and speed of importing from electric CAD and xls, csv and txt files
2. Thanks to the universal feeder, various print jobs can be sent in a single batch
3. Option to identify "preferred" items and those normally used, avoiding the need to select them each time from the main list.